



Awards for Excellence in Planning Practice: Cities & Urban Areas

Gold Winner: City Of Vancouver for *Renfrew Station Area Plan Implementation*



CITY OF VANCOUVER
RUPERT AND RENFREW STATION AREA PLAN IMPLEMENTATION

GOLD Excellence in Planning Practice
 City & Urban Areas

The **Rupert and Renfrew Station Area Plan** provides a vision for the future of a large area (over 260 blocks) anchored by two existing rapid transit stations, a large area designated for employment uses, and one of the last remaining salmon-bearing streams in the City of Vancouver. The plan focused on including only ‘implementation-ready’ policies that could move quickly from vision to reality, and key planning and engineering projects are already being implemented.

The jury appreciated the inclusive, creative public engagement and the incorporation of sustainability from multiple lenses. The emphasis on incorporating public input into the planning process is evident and meaningful, helping to build trust and ensure the plan reflects community needs. Supported by a robust implementation plan, it demonstrates readiness to move from vision to action.

Awards for Excellence in Planning Practice: Cities & Urban Areas

Silver Winner: City of Port Moody and Schema Office of Architecture for *A Guide to SSMUH (Small-Scale Multi-Unit Housing) Developments*

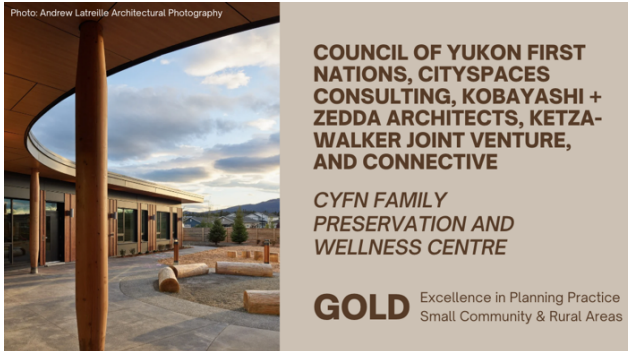
The purpose of **Port Moody’s Guide to Small-Scale Multi-Unit Housing** is to provide information related to SSMUH development, including eligibility, development potential, important considerations, the approvals process, design guidelines, and other useful resources for applicants. While comprehensive in content, it is intended to streamline and facilitate the expedient review of applications to encourage uptake of this development form and get more housing on the ground in the community.



The jury appreciated the guide’s responsiveness to the current challenges faced by the profession to align with provincial legislation to intensify suburbs without destroying character and sense of neighbourhood coherence. It provides a clear, step-by-step roadmap for advancing SSMUH, identifying key stakeholders, resources, and considerations needed to facilitate these projects in the community.

Awards for Excellence in Planning Practice: Small Community & Rural Areas

Gold Winner: Council of Yukon First Nations, CitySpaces Consulting, Kobayashi + Zedda Architects, Ketza-Walker Joint Venture, and Connective for *CYFN Family Preservation and Wellness Centre*



The **Council of Yukon First Nations Family Preservation and Wellness Centre (the Centre)** is a landmark project in Whitehorse, YT, that provides culturally safe emergency housing and supportive services for Yukon First Nations and Indigenous women and children fleeing violence. It is a first-of-its-kind initiative by Yukon First Nations women for Yukon First Nations women.

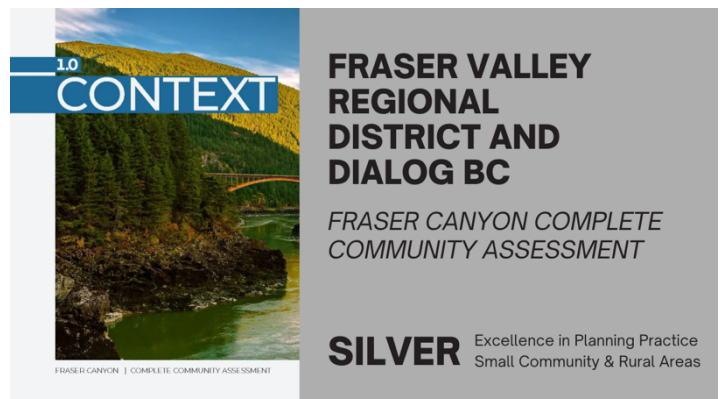
What began as a planning initiative evolved into a capital development project, culminating in a purpose-built, culturally safe centre with sustainable operations funding that directly responds to Yukon First Nations-identified needs.

The jury found this project to be timely, relevant, and filling a deep community need. It illustrates the impact of focused Indigenous-led planning that transforms evidence, interest-holder engagement, and strategic vision into real-world solutions.

Awards for Excellence in Planning Practice: Small Community & Rural Areas

Silver Winner: Fraser Valley Regional District and Dialog BC for *Fraser Canyon Complete Community Assessment*

The Fraser Canyon Complete Community Assessment represents a transformative approach to rural planning in British Columbia, reframing how “complete communities” can be applied in low-density, hazard-prone regions. Faced with housing unaffordability, limited services, and geographic isolation, the project advances a corridor-wide, implementation-focused framework that adapts urban metrics to rural realities. Rather than importing metropolitan standards, the Assessment redefined “complete communities” through rural evidence, lived experience, and financial realism.



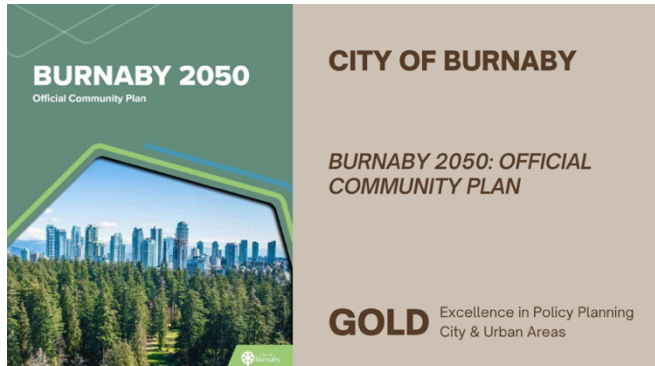
The jury felt the use of a complete communities framework in a rural context to be inspiring, especially with populations in decline. It is a great example of how a focused review of emerging issues in a community can be carried out and inform an update to the OCP.

Awards for Excellence in Planning Practice: Small Community & Rural Areas

Honourable Mention: Sunshine Coast Regional District, School District 46 and Vancouver Coastal Health for *ReMembering Youth Official Community Plan Youth Consultation on the Sunshine Coast*.

Awards for Excellence in Policy Planning: Cities & Urban Areas

Gold Winner: City of Burnaby for *Burnaby 2050: Official Community Plan*



Burnaby 2050 was adopted in 2025, bringing together four years of research, policy development, and community engagement. The City's previous OCP was adopted in 1998 and had seen very little change despite the City's dramatic population growth and change. Envisioned as a wholesale replacement, this undertaking demanded a robust engagement process as well as considerable research and policy development initiatives and introduced new policy tools that had never been used in Burnaby, such as Development Permit Areas.

The jury appreciated the robust overhaul of the OCP that was grounded in a deep and inclusive community outreach process, including Indigenous communities, non-English speakers, and other under-represented groups. It demonstrates that good work takes time and serves as a model for how engagement needs to happen, despite the opposite occurring in contemporary plan making.

Awards for Excellence in Policy Planning: Cities & Urban Areas

Silver Winner: City of Chilliwack and MODUS Planning, Design & Engagement for *Chilliwack 2050: Your City Our Future – Official Community Plan Update*

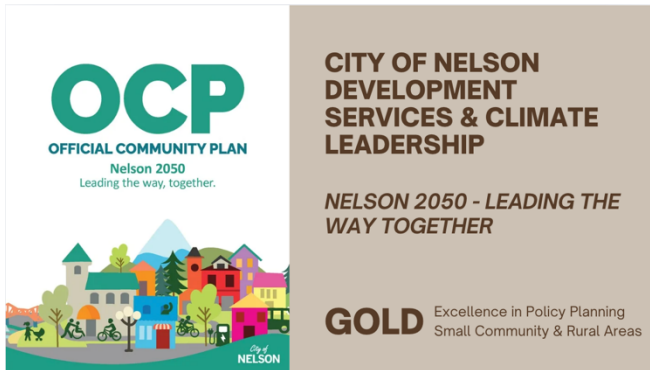
“Chilliwack 2050” is the City's newly adopted Official Community Plan, providing a clear, user-friendly framework to manage rapid growth and changing conditions. Shaped through an ambitious 15-month process, the plan consolidated nearly 90 land use designations into 18 and whittled down hundreds of policies to just over 100 while incorporating input from decision-makers, First Nations, interest holders, the public, and City staff. Key innovations include a new urban structure and growth management approach, the direct integration of land use plans from neighbouring First Nations, a parcel-based model for projecting growth, a new standard for engagement, and an easy-to-navigate document with highly legible imagery and maps.



The jury was impressed with the robust and meaningful Indigenous engagement, and how it thoughtfully addresses current challenges faced by the city, including infrastructure servicing, environmental protection, and social wellbeing, among others.

Awards for Excellence in Policy Planning: Small Community & Rural Areas

Gold Winner: City of Nelson Development Services & Climate Leadership for *Nelson 2050 - Leading the Way Together*



Nelson 2050 is the City of Nelson’s Official Community Plan, adopted unanimously in 2025 following a 30-month, fully in-house planning process. The plan establishes a long-term framework for land use, housing, climate resilience, infrastructure, economic development, and community well-being. Grounded in community-defined foundation values and guided by the principles of equity, health, and climate, Nelson 2050 integrates environmental, social, economic, and cultural sustainability directly

into policy, land use designations, and implementation tools.

The jury was impressed with how the policy was rooted in local needs rather than hypothetical ideals. Produced in-house with a small budget, the plan is very transparent with a depth of public process, which is reflected in a final plan that feels authentic and specific to the City.

Awards for Excellence in Policy Planning: Small Community & Rural Areas

Silver Winner: City of Langford and Toderian UrbanWORKS for *City of Langford Official Community Plan*

“**The Langford Plan**” is a forward-looking Official Community Plan and an innovative policy model that combines the structure of a typical OCP with an action plan focused on implementation, follow-through, and accountability. Public engagement was central throughout the 18-month development process. Early introduction of ideas allowed multiple rounds of feedback, giving the community real influence over how proposals developed.



The jury found the plan concise and visionary, with the incorporation of capital planning and the use of targets and commitments to drive the vision forward. It is aspirational and practical, with detailed policies to support the vision.

Awards for Research & New Directions

Gold Winner: Cowichan Valley Regional District (Coralie Breen, PhD, RPP, MCIP and Alison Garnett, MCP, RPP, MCIP), MODUS Planning, Design & Engagement and Stantec for *Towards a Shared Vision Island Rail Corridor CVRD*



The **Towards a Shared Vision Island Rail Corridor Cowichan Valley Regional District** project evaluated future uses of the CVRD portion of the Island Rail Corridor by considering First Nations' interests, environmental impacts, and risks related to current and possible changes in how the corridor might be used. The focus was on assessing which potential uses would be suitable both in the short and long term from land use and transportation standpoints.

The jury felt that this project demonstrates how other communities can address the complex task of balancing goods movement with recreational use and housing pressures adjacent to existing rail corridors. It serves as a playbook for other jurisdictions considering options for similar corridors across the country.

Awards for Research & New Directions

Silver Winner: City of New Westminster, Metro Vancouver, BC Hydro, WATT Consulting Group and Introba for *Charged and Ready: EV-Ready Residential Building Experiences in BC*

The **Charged and Ready: EV-Ready Residential Building Experiences** study evaluates the effectiveness of EV-ready bylaws in new residential buildings and provides recommendations to address barriers and challenges to the successful implementation of these bylaws.

The jury appreciated the strong transferability of this work, with research findings applicable to communities of all sizes. It addresses an important and timely topic, focusing on EV-ready bylaws in residential developments, and identifies the resources necessary to translate EV policies into actionable programs, and establishes a comprehensive public engagement process.



Awards for Research & New Directions

Honourable Mention: Vancouver Board of Parks and Recreation, Mott MacDonald and MODUS Planning, Design & Engagement for *Stanley Park Mobility Study*